



2021-2022

User Manual – King Catcher Solar Insect Light Trap



Please read carefully before using
This equipment and retain for future use



IMPORTANT

This trap does not involve fogging, pesticides, repellents, citronella, coils or candles. It does not use Dangerous or toxic chemicals known to be harmful to humans and the environment. The King Catcher Solar insect Light Trap uses environmentally friendly methods and is safe to you and your environment.

How King Catcher Works :

King Catcher comprises of a light source as an attractant and an electric mesh to electrocute insects into the insect collecting chamber. A stand has been provided to install the light trap in the crop fields. The stand accommodates an insect collecting chamber. The tray contains a cap in the bottom required for opening and closing the tray.

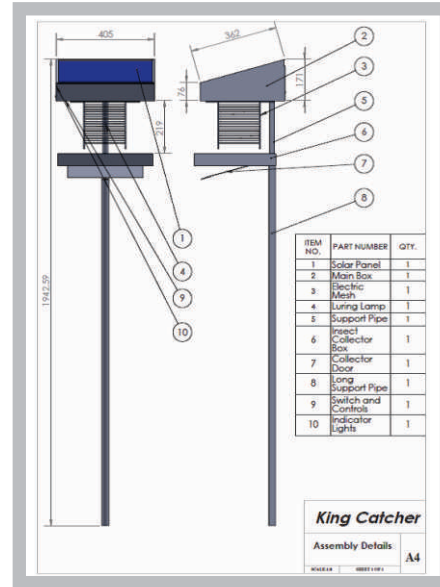


Figure : 1

WHATS IN THE BOX

1. Main box Assembly 2. Solar panel 3. Tray assembly 4. Lamp 5. Fuse 6. King Catcher stand is provided separately OR is in the scope of the customer as per the required height.

Installing the King Catcher



STEP 1

- Insert pipe in ground as per the height of the crops / plants / trees.
- Make sure the 1" support pipe is inserted & then adjust its height by screw.
- Pipe is inserted in the ground enough to sustain the wind pressure.



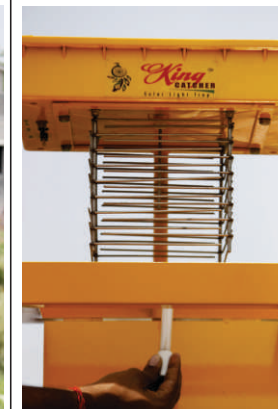
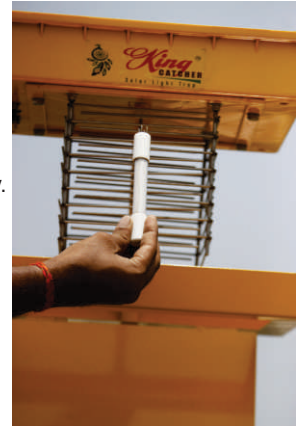
STEP 2

- Remove King Catcher from the box.
- Insert the bottom pipe in the 1" pipe already installed.



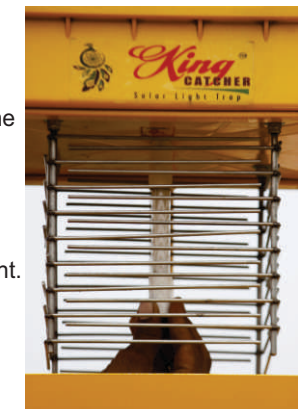
STEP 3

- Rotate the bottom knob.
- Open the bottom tray.
- Remove the tube from the box.



STEP 4

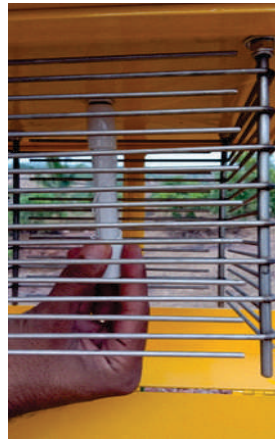
- Insert the tube in the tube slot provided.
- Make sure that the wire is wrapped around the tube light.



STEP 5

- The wire has to be wrapped around the tube for working. In the new design, we have provided a SS rod in place of the wire.

- This is for better attraction

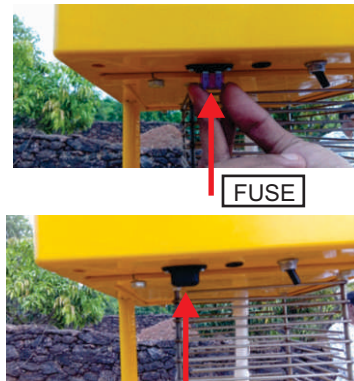


STEP 6



- To insert the fuse, remove the fuse cap.
- Insert the fuse in the fuse slot and install the fuse cap over it.

Make sure the system is off before inserting the fuse. Also, as far as possible do not insert the fuse in broad sunlight. Insert the fuse inside and then install the machine.



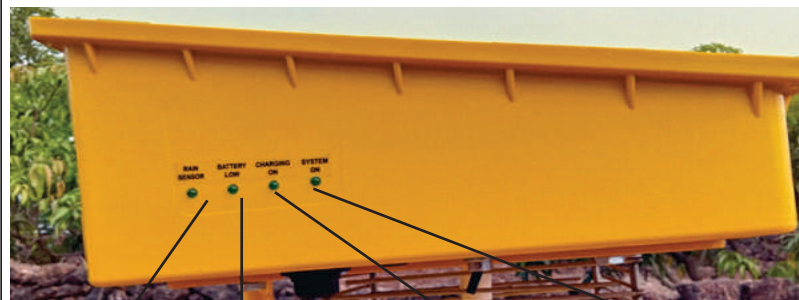
FUSE

FUSE CAP

STEP 7 Switch ON



King Catcher Indicators



Rain sensor ON
Machine will shut automatically during rains

Battery LOW
Indicates battery is not charged or the charge is used up

Charging ON
YELLOW light will blink when machine solar is charging

System ON
Green Light will blink when machine turns ON

Important Instruction

1. Do not touch the wire mesh while the machine is ON.
2. Solar panels should be cleaned periodically to ensure efficient charging.
3. Check indicator lamps to learn the tasks of King Catcher.
4. Clean the insect tray regularly.
5. Position the King Catcher so the front side faces the south direction.

Trouble Shooting

1. If the system ON light does not light –

- Turn the system OFF and check the fuse. Press the fuse in and try again.
- Remove the tube light. Rotate and insert the tube again in the female connectors. This time, the male and female connectors are not the same as before.

2. The system, after working for some time, shuts off.

- Charge the batteries in the bright sunlight and the system will start working again.
- If there is too much of humidity or moisture, sometimes the charging port can get moisture inside it. Use a dryer to dry the port and the system will start to work.

3. The system is dead.

- Remove the solar panel and check for the connections.
- Press in the loose connectors if any and start the machine. This might happen due to bad material handling in transport.



Works : Plot No. H-18/1, Behind Latthe Polytechnic, M.I.D.C.,
Kupwad Block, SANGLI. 416 436, Maharashtra (INDIA),
Ph. 0091 233 2645633, Mob. +91 9370716666

Email : palviindustries@gmail.com

web www.parixitgroup.in www.lighttrap.in

Office : PARIXIT GROUP, Siddhivinayak Fouram, Floor No. 3, Unit No.3,
Opp. Z.P., SANGLI 416 416 (M.S.), INDIA.

Contact - 0091233 - 6601233, Mob. 0091 9822261833